



# Comprehensive Plan Project Overview

---

Town of Hatfield



# Some history

1986

Comprehensive Land and Use Plan  
Consultant: Almer Huntley Jr & Assoc. Inc.  
Process:

- Listening sessions, public hearings
- Led to map and zoning changes

2002

Hatfield's Master Plan for the 21<sup>st</sup> Century  
14 committee members  
Consultant: PVPC  
Process:

- Surveyed townspeople, held 3 public meetings
- Results determined topics of 6 working papers written by Committee members with public input.
- Led to some implemented recommendations.

2021-2022

2021

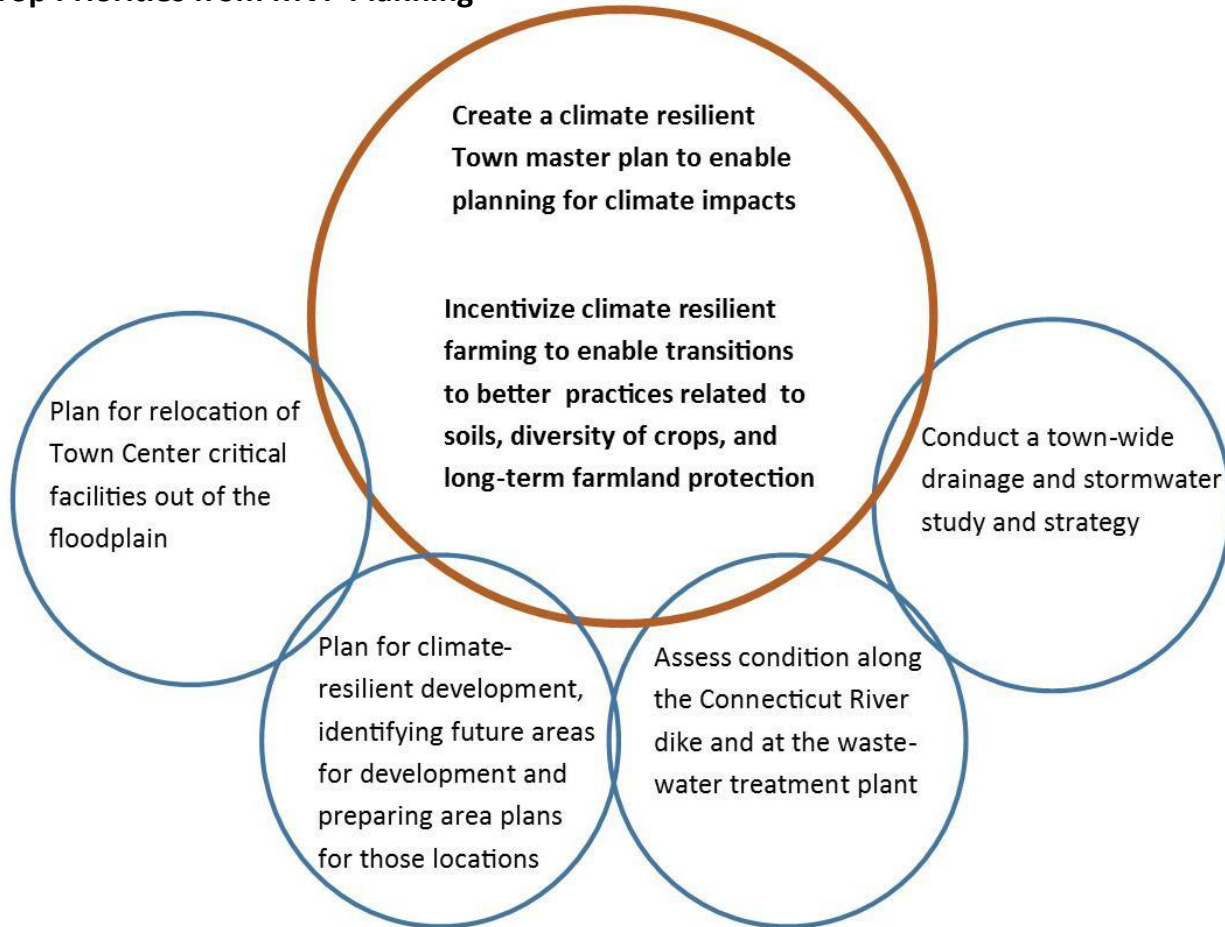
Municipal Vulnerability Preparedness (MVP) Plan completed.

Plan defined Comprehensive Plan as a priority.

2022

Based on grant application with PVPC, Hatfield awarded \$283,900 MVP Action grant for Climate-Smart Comprehensive Plan by Baker administration.

## Top Priorities from MVP Planning



# Process - 2024 Climate-Smart Comprehensive Plan

---

## Year 1 (November 2022 to June 2023):

1. Confirm purpose, workplan, and get input from Comprehensive Plan Committee (CPC)
2. Consultants do analysis, collect data, conduct specific outreach, prepare chapter background papers and reports, and come back with drafts for committee input and finalize
3. Engage public for input

## Year 2 (July 2023 to June 2024):

4. Consultants with CPC chapter captains meet with working groups to draft chapters & then share with larger CPC group for feedback
5. Engage public for input on draft chapters
6. Compile chapters into formal plan document and develop action plan
7. Approval and submission of final document

# Comprehensive Plan Elements

---

*Planning Process and Engagement*

*Community Setting – Physical features, demographics, and climate change risks and vulnerabilities*

Land Use

Housing

Health and Social Environment - to include age and dementia friendly action plan

Farming

Economic Development

Historic and Cultural Resources

*Natural Resources, Open Space, and Recreation*

Transportation and Circulation

Facilities, Services, and Social Resilience

*Action Plan*

**Yellow** = plan elements not required by MGL, Chapter 41, Section 81D

*Italics* = plan elements that will involve review by the Comprehensive Plan Committee, but will not require chapter working groups

# Consulting team



Also vendor for training on diversity, equity, and inclusion

Questions?